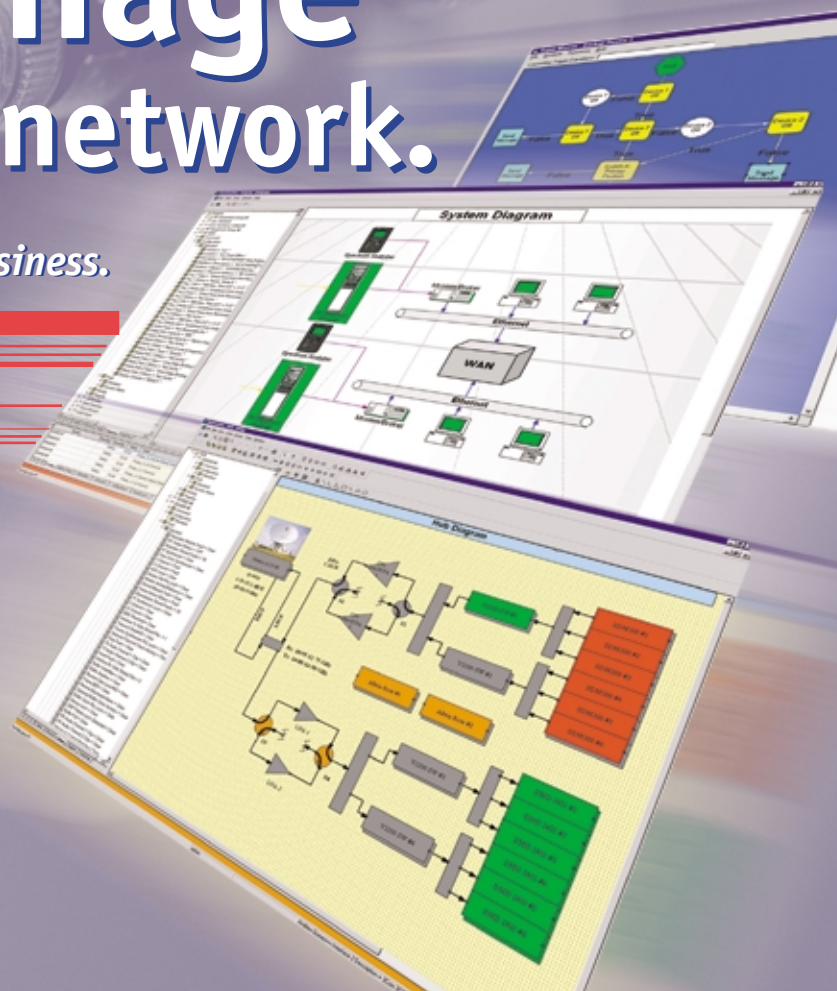




The Logical Choice in  
Network Management.

# We'll manage your network.

● ● ● *So you can manage your business.*



### MaxView® Plus Features:

- Manages hybrid networks and multiple platforms
- Open architecture, Windows, Unix, Linux
- Create drivers without programming experience
- Extensive driver library
- Automatically discovers SNMP devices
- Simple point-and-click Java GUI interface
- Easy to operate
- Minimal training required
- Inexpensive to maintain
- Modular system facilitates cost-effective growth and expansion
- Increases uptime and reduces network failure
- Automated event management and self-recovery capabilities
- Reliable and scalable

No time.  
For downtime.

You're  
not alone.

*As a network operator in today's world, you understand how it feels to be ill equipped and unprepared to continue delivering the quality of service your customers have come to expect. Despite the abundant availability and utilization of network management technology, your organization can still be susceptible to the challenges of monitoring and controlling your network. To top it all off, your recruiting, retention and training expenses continue to rise while you're being pressured to cut, or at least displace, operational costs.*

Some 200 organizations on seven continents worldwide were faced with these challenges, too. Their solution was a logical one — ILC. Since 1993, we have been developing and delivering our management systems to network operators just like you. *The result — a stunningly flexible system that plugs into ANYTHING so that you can manage EVERYTHING.*

To achieve this level of power and flexibility, we developed a formula that helps our customers conquer the pains associated with managing complex networks. We call it the "MaxView Plus Advantage." And despite our heritage in monitoring and managing space technology, we don't think you have to be a rocket scientist to figure out that MaxView Plus is just good common sense.

# The Technology Factor

*Need to Manage Multiple Platforms and Non-Standard Devices?  
We Ease the Pain.*

**MaxView Plus Advantage:** *Reduce your dependence on key individuals and respond faster to your network. One platform can manage all network elements, from standard SNMP devices to legacy serial, parallel and IP-based equipment, from one site.*

While diverse technology can enhance your network, it's a pain to monitor and manage. Most network operators end up with multiple management systems and increased training and staffing issues.

At ILC, we designed the MaxView Plus network management system to operate on a variety of networks, including cable, terrestrial and microwave networks, satellite earth stations, switching systems and more. MaxView Plus can manage hybrid networks from one site, and can also interface with non-standard equipment—such as power, security, and environmental control systems—that are an integral part of your network operations.

How do we manage the technological diversity required to plug into any network? Our open system architecture consists of several primary features that provide the highest benefit to network operators.

## Modular Architecture

MaxView Plus can reside on a single computer or be distributed throughout a large, distributed network. The basic system can

manage thousands of network elements, and communications servers for equipment in different locations can be added at any time. Operators can have an unlimited number of stations by adding graphics servers, which can connect to the system over LAN, WAN, dial-up connection or Internet connection. Other capabilities such as the Event Manager and the Driver Development Kit can be added as your network expands.

## SNMP Management

**SNMP Southbound**—MaxView Plus has the ability to manage SNMP devices. The system can be configured to poll SNMP devices on a periodic basis, issue commands, receive and process traps, and automatically discover SNMP devices.

**SNMP Northbound**—MaxView Plus can itself be managed using SNMP. In this scenario, MaxView Plus acts as a proxy agent for the devices under its control. The SNMP manager can be used to manage the SNMP equipment. In this role, MaxView Plus can save valuable time by automatically notifying the management system when equipment is added.

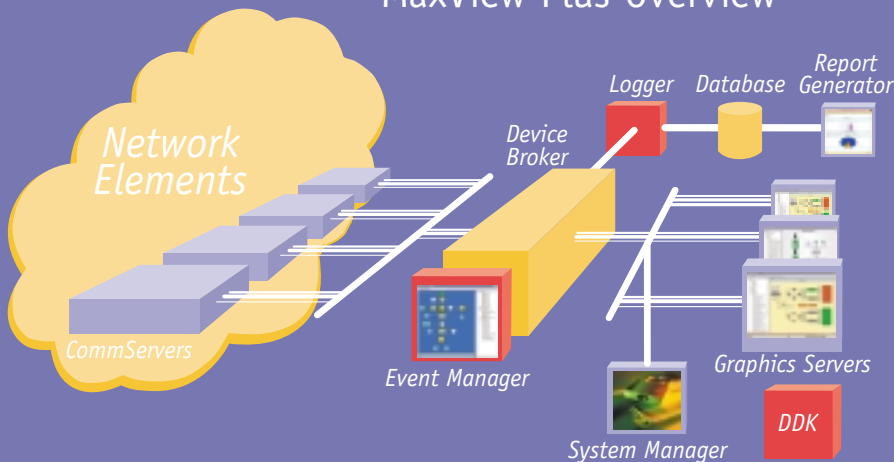
## Event Management

MaxView Plus features an **Event Manager** that can be tailored to take action automatically during changes in the state of the network by launching a program, running a series of commands, or scheduling actions for you. The system can be set up to send alerts through pages, emails, or messages to computers on the network, helping you detect network problems and recover from them with minimal risk of downtime. It even has the ability to automatically solve problems when they occur or re-route traffic on a failure or based on loading. Essentially, the **Event Manager** solves your problems before your customers know they exist.

Additional features of the basic MaxView Plus package include:

- User configurability
- Diversity site switching
- Uplink Power Control
- Backup switching
- TCP/IP Connectivity
- Internet enabled
- Java GUI
- Cross Platform (NT, Solaris, Linux)
- Web-based reporting tools
- Web-based configuration tools
- Real-time reporting
- Historical trending
- Custom reports tools

## MaxView Plus Overview



### Flexible

- Platform Independent
- Open Architecture
- Modular
- Easy to set up
- Configurable

### Standards-based

- Java
- SQL/ODBC
- SNMP
- Cross-platform (NT, Unix)

### Low Cost of Ownership

- Create Drivers without programming
- Add capabilities as needed
- New Drivers free with active maintenance

# The Human Factor

*To Err is Human. To Forgive is Your Customer's Prerogative.*

*We help your staff identify problems before they're forced to ask for forgiveness.*

**MaxView Plus Advantage:** Respond faster to network failures and use your staff to help customers and increase business opportunities by transferring the operational know-how to the network management system.

Competition is fierce, and customers don't have to be forgiving. They have too many options to tolerate a service provider who can't deliver world class service. At ILC, we assist your staff in identifying problems before they become problems. MaxView Plus is designed to make your life as a network operator easier. Here's how.

## Point and click graphical user interfaces

Our graphical user interface (GUI) is totally configurable and easy to learn. It allows you to define color codes and manage equipment from a tree, graphic or grid — whatever you find easiest. You can also edit screens online to add pictures, drawings and text. You can even drag objects from a tree onto a block diagram.

## Easy to learn

MaxView Plus will run on Unix or Windows NT, and its Java user interface operates like a common Windows application, so operators can begin using it immediately.

## MaxView Plus Event Manager



- Configure the network on a schedule
- Show status of services, customers, subsystems
- Re-route traffic on a failure or based on loading
- Send messages, run programs, play sounds on network change
- Automatically solve problems when they occur
- No programming expertise required

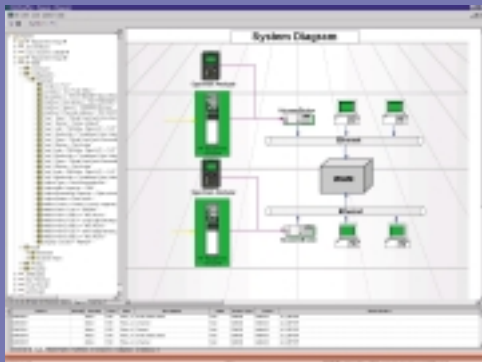
## Easy to operate

Operators can use a familiar Web browser interface to configure the equipment according to their needs. Operators can also edit diagrams while the system is running. When an alarm occurs the system will notify operators immediately, and you can locate the problem quickly and efficiently.

## Easy to configure

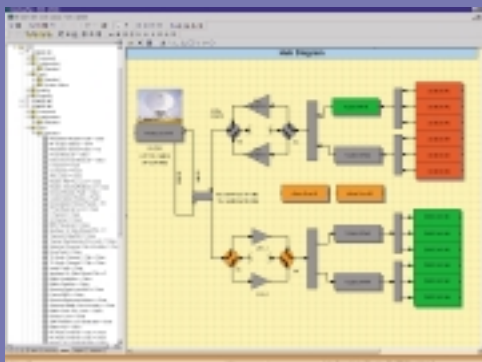
Operators can edit diagrams while the system is running using a Web browser interface to configure the equipment.

## MaxView Plus Graphics Server



- Graphically depicts the state of the network
- Navigate from Tree, Diagram or Grid
- Grid shows current faults, fault history, command history
- Simple interface means fast training for operators
- Diagrams can be different for different users, customers

## MaxView Plus Graphics Editor



- Draw screens that represent how you view your network
- Simply drag equipment from the physical tree to the diagram
- Operates like PowerPoint, Visio
- Add pictures, floor plans, maps
- Changes reflected for all users when saved

What's more, we've ensured MaxView Plus is compatible with other popular management systems so you aren't forced to view multiple management system GUIs. MaxView Plus simply passes through the data it collects for processing by the other management system.

MaxView Plus has a number of tools that help make your life as a network operator easier, including:

- Drag and drop configuration
- Web-based event reports
- Trending analysis tools
- Outage reports
- Multi-tiered graphics
- Visio-like drawing tools
- Customizable screens assigned by user

Logical. Simple. Easy to use. All add up to easing your network management pain.

# The Economic Factor

*Generate More Revenue and Decrease Operational Cost .  
We're on that.*

**MaxView Plus Advantage:** *Increase network uptime (revenue) by reducing network downtime (costs). A network management system must be flexible enough to enable additional technologies to be added seamlessly to the core network, thereby increasing the value of your service.*

According to a 2000 study by Infonetics, U.S. businesses with more than 1,000 employees lose an average of two percent of their annual revenue due to network failure. To put it mildly, there's no time for down time.

MaxView Plus helps you reduce costs by increasing the availability and operating efficiency of your network. Further, MaxView Plus' modular design and software gives you the freedom to add devices, features, software and users to the network as operations expand or change to suit your business needs. This means you can add new services and new technology, both of which create new revenue streams, with confidence and ease while maintaining a low cost of ownership.

## **Low Cost of Ownership**

MaxView Plus gives you the ability to create your own drivers through our Driver Development Kit. The Driver Development Kit gives network operators the independence to create new equipment drivers for the system without previous programming expertise. The kit allows operators to develop drivers in a matter of hours as opposed to a matter of days or weeks.

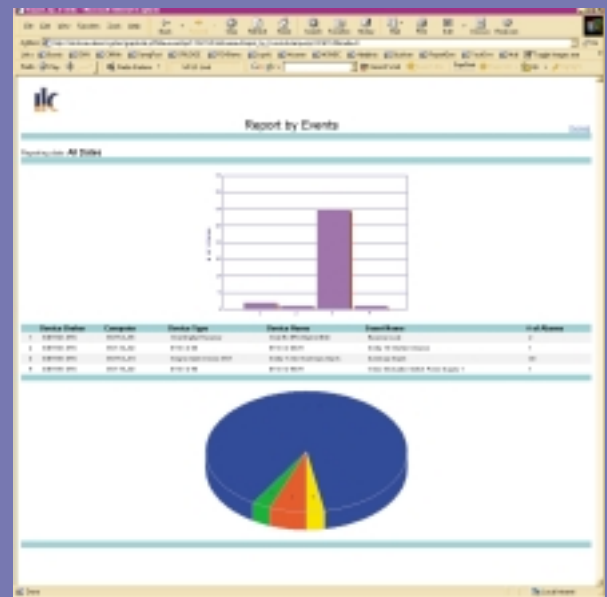
Customers can create drivers free of charge using the Driver Development Kit or by accessing ILC's extensive driver library.

## **Return on Investment**

MaxView Plus not only manages your network with ease and flexibility, it helps you make money. MaxView Plus adds value to your business by:

- Automating repetitive activities to improve efficiency and reduce errors
- Improving the quality of service for your network
- Providing alerts when network resources need to increase so you can handle more customers
- Creating valuable reports on the network utilization of your customers and equipment degradation
- Improving customer service by configuring the system to email or page the right people
- Eliminating the need to train your personnel on multiple management systems

## Report Generator



- Track and analyze data
- Print statistical data and reports on status of analogs and faults
- Runs on multiple computers
- Shows trending features

Simply put, MaxView Plus reduces the costs and lost revenue opportunities associated with downtime by reducing the network failures associated with managing cross-platform and non-standard devices. Every network operator knows uptime leads directly to customer satisfaction and maintaining or even increasing revenues. Let us manage your network... so you can manage your business.

## **ILC: The Logical Choice in Network Management**

MaxView Plus can be an integral part of your network management efforts no matter how small or complex your system. No matter what issues you're facing — technical, human resources, economical — ILC has a logical solution. What else would you expect from the company that developed the logical choice in network management?

For more information, visit [www.indlogic.com](http://www.indlogic.com) or call us at 404-504-7400.



*The Logical Choice in  
Network Management.*

**Global Headquarters:**

ILC  
Fifteen Piedmont Center, Suite 700  
Atlanta, GA 30305 USA  
404-504-7400 (v)  
404-504-7401 (f)  
indlogic.com

**Worldwide Distributors:**

Argentina: Technology Bureau  
Brazil: Scan Tecnologia  
Mapra Electronica  
Canada: Facilities Planning Specialists  
Chile: Xtremo  
France: Metracom  
Peru: Avantec  
U.K.: EML  
Venezuela: Interphase

*MaxView Plus is a registered trademark of Industrial Logic Corporation. Their  
respective companies register all other trademarks referenced in this document.*